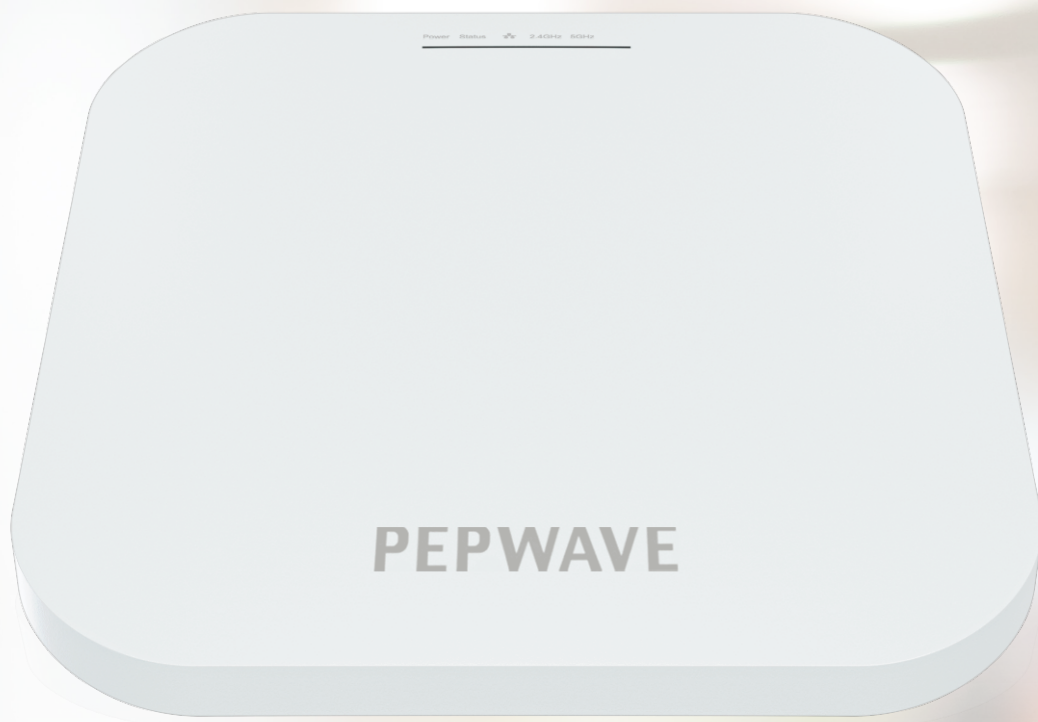


PEPWAVE | AP ONE AX



Better Coverage and Speed with Wi-Fi 6

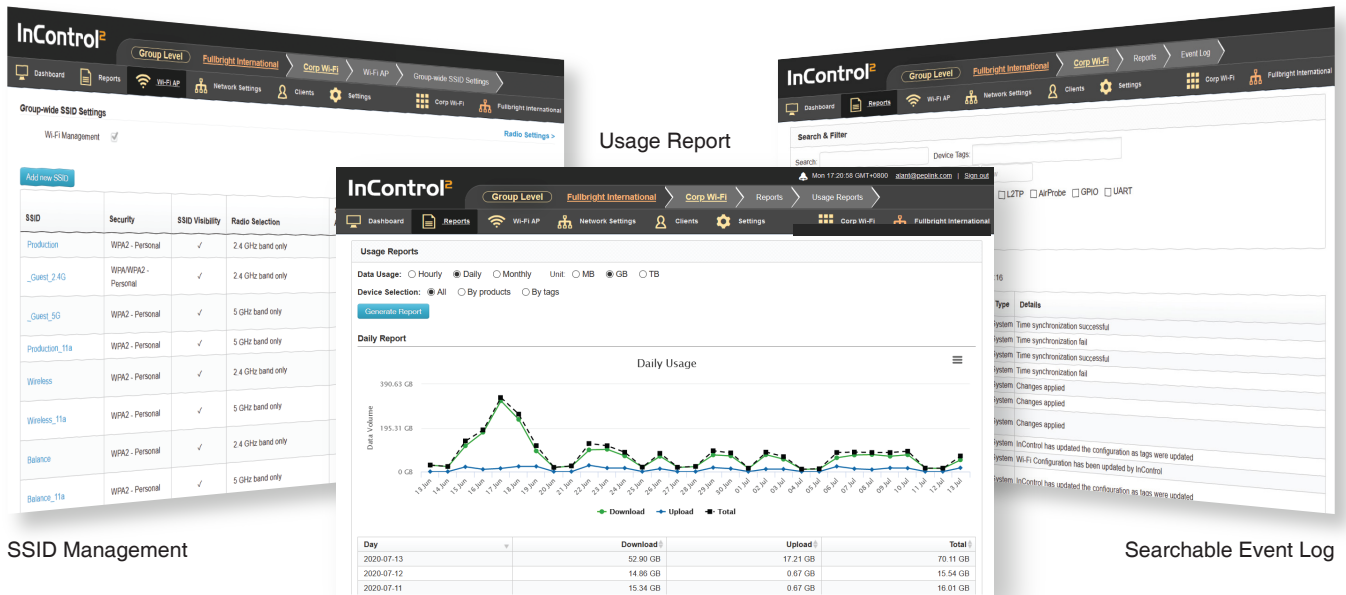
Deploy Anywhere, Manage Centrally

Turnkey or Custom Captive Portals

Enterprise-Grade Fast Roaming

Seamless Peplink SD-WAN Integration

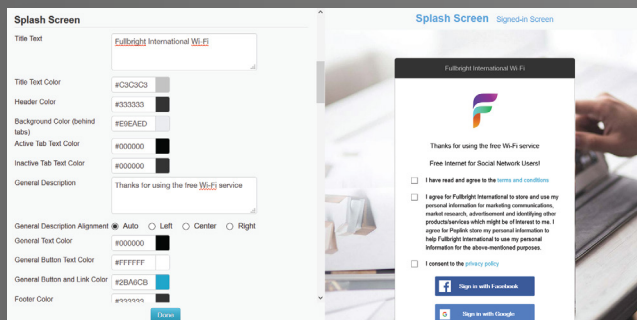
Manage Centrally, No Extra Hardware Needed



Each AP One AX comes equipped with InControl central management. View the health and data usage of your network from any web browser. Centrally manage your

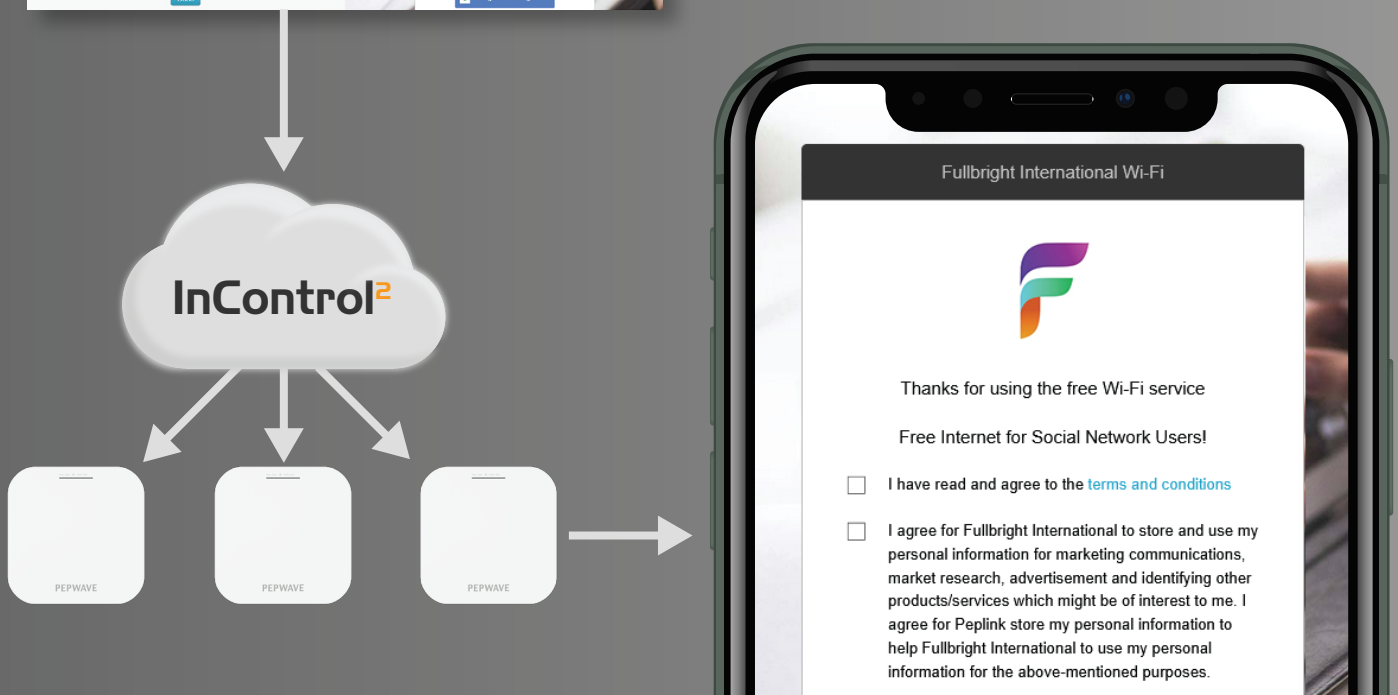
network's SSID and radio settings from a single pane of glass. Use the searchable event log to quickly diagnose your entire network.

Turnkey or Custom Captive Portals



Customize your captive portal as little or as much as you would like. Right out of the box, it includes a captive portal ready for immediate use.

For a more branded user experience, you can edit every aspect of the captive portal using InControl.



Simply Better Wi-Fi

Wi-Fi 6: Faster, Better

This technology is 45% faster than Wi-Fi 5, has 4x more device capacity, and consumes less power for connected devices.

Enterprise-Grade Fast Roaming

This device supports 802.11k, v, and r, providing users with a more seamless roaming experience between access points.



Seamless Peplink SD-WAN Integration

The AP One AX works seamlessly with other services in the Peplink ecosystem, providing

unique network capabilities, unmatched network flexibility and ease of use.

InControl Central Management

Monitor network health on a single dashboard. Push configuration profiles on multiple devices at once. Remotely access the Web Admin of any device.

Balance/MAX/FusionHub

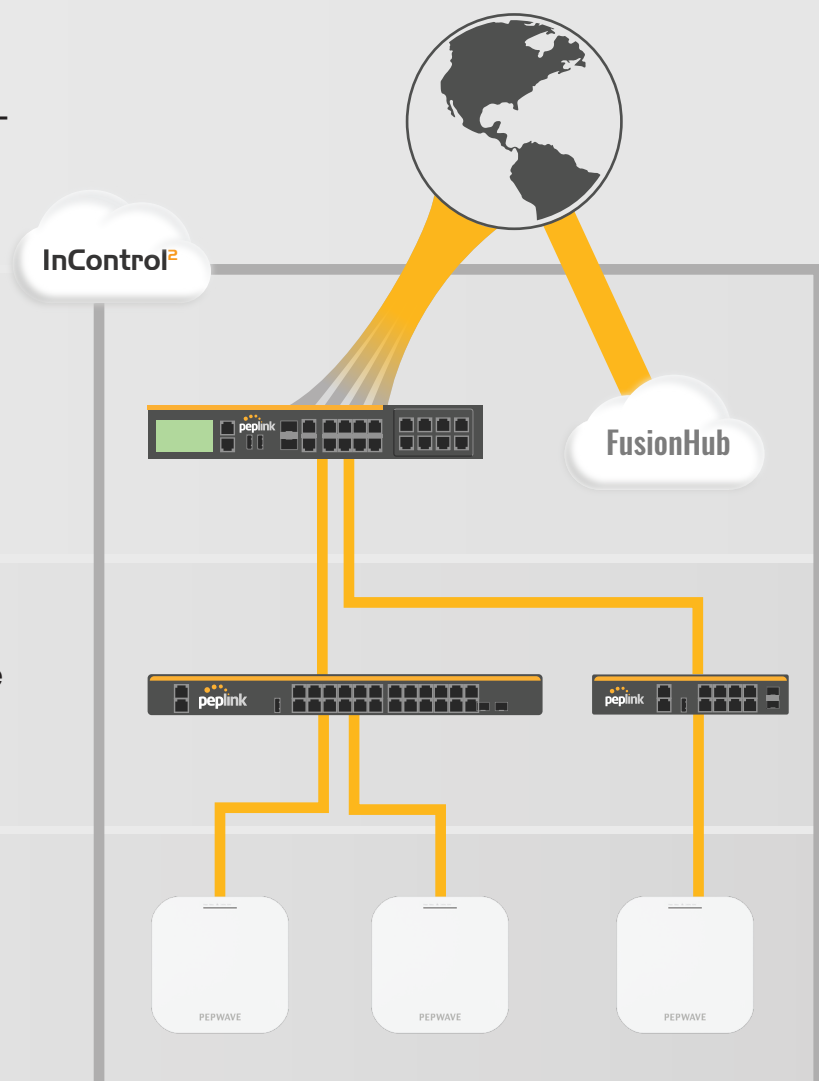
Provides unbreakable connectivity by combining multiple WANs. Works with InControl to centralize VLAN, firewall, and outbound policy.

SD-Switch

Works with InControl to remotely configure and activate PoE ports. Monitor power consumption.

AP One

Works with InControl to centralize SSIDs, radio settings, and deliver captive portals.



AP ONE AX SPECIFICATIONS

| Product Code | APO-AX |
|--|---|
| Ethernet Port | 1x 2.5 Multigigabit Ethernet |
| Wi-Fi Standard | 1x 2.4Ghz 802.11b/g/n/ax 1x 5Ghz 802.11a/n/ac/ax |
| Data Rates | 4X4 MU-MIMO 2.4 GHz: up to 1148 Mbps 5 GHz: up to 2400 Mbps |
| Channel Width | 20/40/80 MHz |
| Recommended Concurrent Users per Radio | 256 |
| SSID Per Radio | 16 |
| Transmit Power | 2412 – 2472 MHz: up to 17dBm 5180 – 5825 MHz: up to 17dBm |
| Included Antenna | Built-in Omni Antenna Antenna gain: 2.7 – 5dBi for 2.4GHz, 3.8 – 5.6dBi for 5GHz |
| Enclosure | Plenum-rated, Indoor Plastic |
| Dimensions | 8.1 x 8.1 x 1.3 inches 205 x 205 x 32 mm |
| Weight | 1.73 pounds 785 grams |
| Power Input | DC Jack: 12V DC AC Adapter: AC Input 100V – 240V, DC Output 12V, 3A* 802.3 at PoE # |
| Power Consumption | 24W (max.) |
| Operating Temperature | 32° - 104°F 0° - 40°C |
| Certifications | FCC, CE, RoHS |
| Warranty | 1 Year Limited Warranty |

* Optional feature.
PoE Injector is available separately.

| | | | |
|---|--|--|--|
| Network Bridge Mode Router (NAT) Mode Wireless Distribution System (WDS) Support for PPPoE, Static IP, DHCP Management VLAN Spanning Tree Protocol | AP Security Open WPA/WPA2/WPA3-Personal WPA/WPA2-Enterprise | Client Management Per SSID VLAN with QoS (802.1p/802.1q) Bandwidth Control MAC Address Filtering Layer 2 Client Isolation Limit on Max. Number of Client Per Client VLAN with RADIUS VLAN with VLAN Pool Bandwidth Control Multicast Filter IGMP Snooping/Multicast Enhancement | Captive Portal by InControl Package Contents AP ONE AX Ceiling Mount Screw Kit |
| Radio Multiple SSID Auto Channel Selection Transmit Power Adjustment Neighbor AP Detection | Device Management Web Administrative Interface InControl Cloud Management Peplink AP Controller SNMP v1, v2c and v3 | | |

Ordering Information

| Product Code | Description |
|--------------|---|
| APO-AX | 4x4 MIMO Wi-Fi 6 AP for Business, manageable by InControl 2. Simultaneous Dual-Band 802.11ax/ac/b/g/n |

Add-on Feature

| Product Code | Description |
|--------------|--|
| ACW-107 | 802.3af/at PoE Injector. Compatible with MAX Hotspot and AP One AX |
| ACW-602 | 1x12V3A Power Supply. Compatiable with MAX HD2 and AP One AX |

